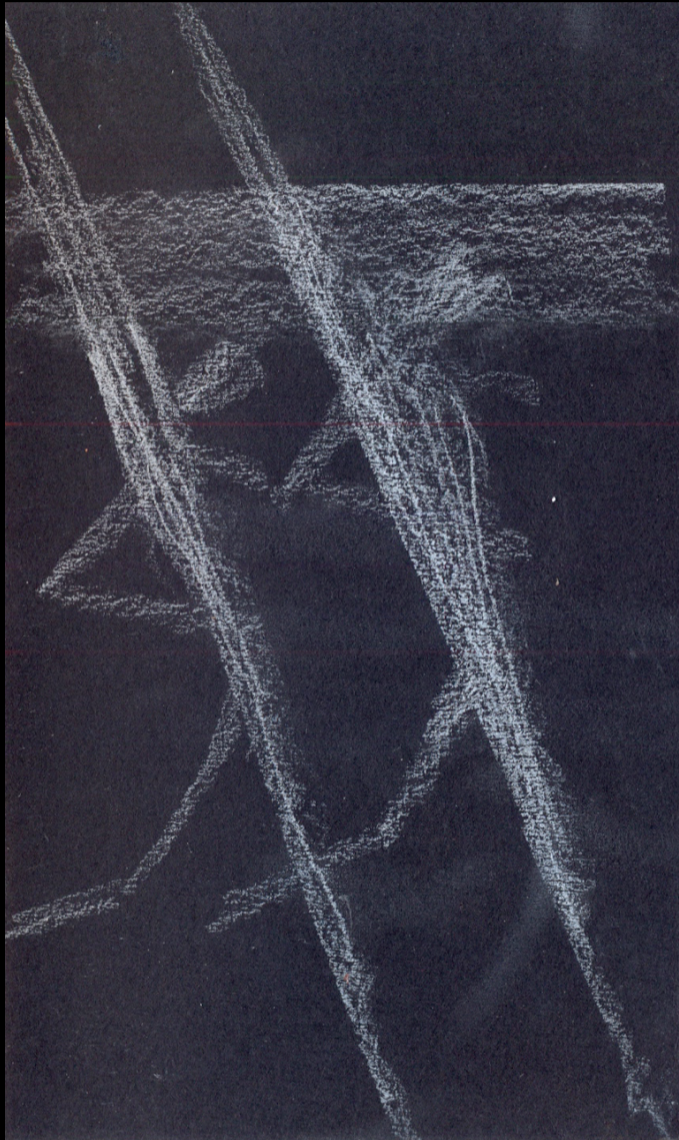


At the turn of the century my great grandfather, **Thomas Lythe** moved to Leeds from North Yorkshire in search of a better life for his wife and two children. Leeds at that time was an industrial hub for the production of wool textiles and steel and indeed there was no shortage of work. The work my great grandfather sought was in the steel mills of Hunslet which ran along side the river Aire. The river at this time was important for the transportation of coal to the iron and steel forge. **It is this river, and the walk along the river** which has served as a **catalyst** and an inspiration for me to explore my own family history once more. My great grandfather's journey inspired this series of photographs. **This walk and this work is a journey, and my grandfather's journey is my journey .**



These works reveal my long standing obsession / function with the elemental character of abstract movement. The photographs show restless movements powerful energies, physically expressed rhythms, multilayered works, images I felt moved to photograph. Revealing hidden, daemons, ghostly spectres and

perspectives. I draw my inspirations from **personal life histories** expressed through a hybrid practice whereby different media and artistic disciplines are combined. This technique informs the way I photograph and express myself. Threads of honesty, fairness and justice drive my work and inform how I feel connected to the world, my love of fairness and hatred of social injustices have

shaped my practice. **Walking is my methodology, every walk I make is a story, physical, allegorical, and metaphorical.** I love gothic traditions of the sublime and awe, ideas of danger, grief and loss. Through my practice I am reaching into my past, my memory of the past through story telling of my family's journey and my own, linking it to current social and political events. I believe to live in a more harmonious world we need to learn to help and respect one another more than we are. My practice is connected to personal histories about social concerns and the future. Photography is the vehicle through which I channel my practice and concerns. I like to think of it as a starting point - a sketch book - my camera is my paint brush through which I attempt my story telling. I like to leave a sense of ambiguity in my work, I want the viewer to formulate their own ideas and opinions about the images, while at the same time trying to determine my intentions. What's that in the foreground, **is it a hand, a face, a ghost?, could be a landscape of another world?** The photographs are personally evocative alluding to movement, echoing the historical movement of people, people moving to find work. Hidden in the depths of the images are references to the overwhelming power of nature revealing ghostly hauntings and fears.

The mono prints I am making of the **River Aire are full of Action, Energy, and Power.** Using long time exposure photography they are always different, evoking movement in a surreal and uncanny way . Sometimes the images don't even look like water, **more like skin or fur.** They **embody vortexes which suck your vision in, like water down a plug hole.** Tunnel-like diptychs, **ghostly spectres**, which guide the eye, play with your perception. The viewer is guided towards the light from the dark, a recurrent metaphor I use in my work, perhaps reflecting people's desires and hopes of a better life. The images are of water but due to the way they have been executed , using slow shutter speeds and intense sharpening, they have taken on an abstract dimensions of other worlds" dark and slightly surreal. Drawing parallels with my own family's history; Its about memory and story telling, inspired by personal histories hauntings and layering.

**Lythe's thoughts about**

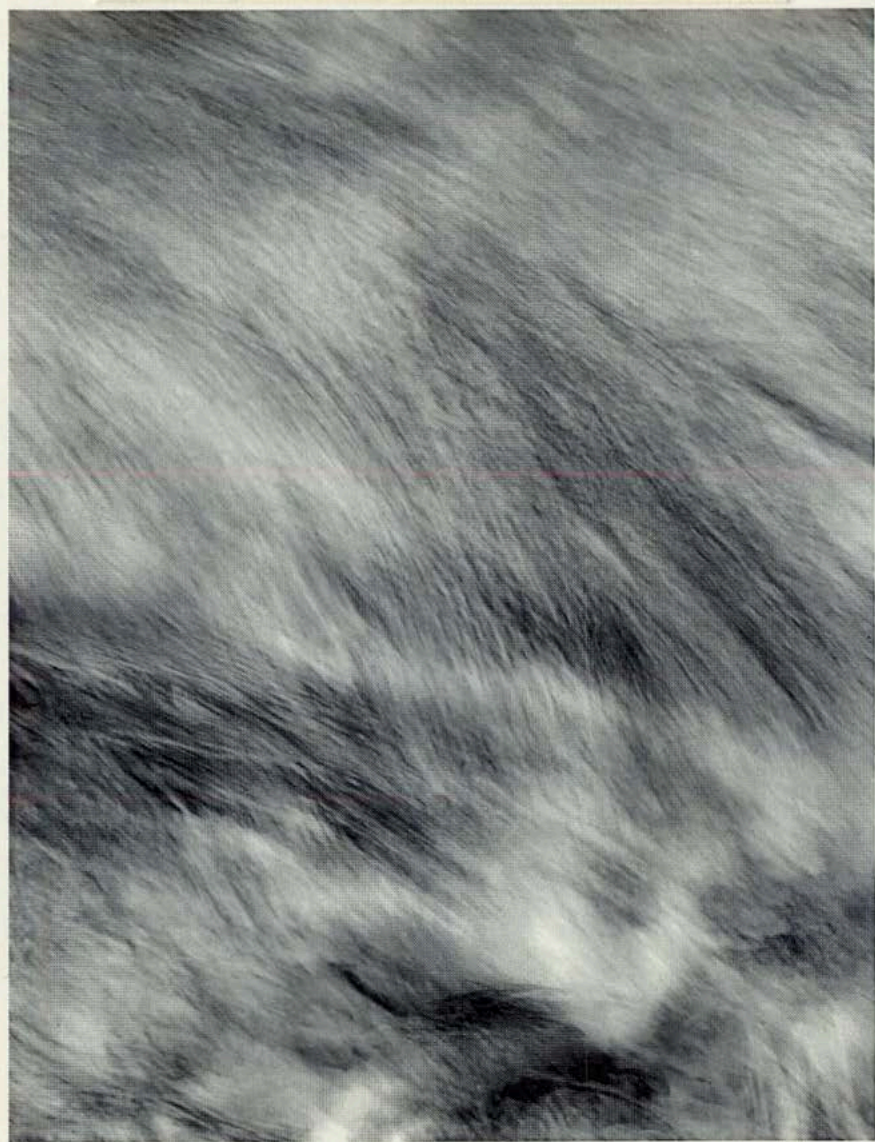
**ROAM!  
ROAM!  
ROAM!**

**followed by examples of present and past works**

~~Psychogeology~~



Psychogeology  
embedded in



I love the vortex effect made when one ~~of the~~ images is flipped over and placed next to the original. My first thoughts were echoes of Turner, but that wasn't intentional. Then I began thinking that the water looked quite fur like again unintentional. By chance I had created an "other" world.

[ROMANTIC] > [SUBURB] > [Collision]



IMG\_3512.JPG



IMG\_3513.JPG



IMG\_3559\_2.JPG

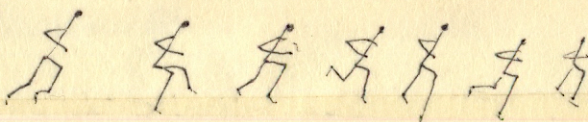
\* REFLECTIONS AND  
CONTRASTS - COMFORT  
AND DISCOMFORT.  
INTERESTING POINT  
WHERE THE TWO  
MEET!  
(INTERLANDS)  
NATURE/COMMODITIES

MOVEMENT  
[THE FLOWING NATURE OF WATER]

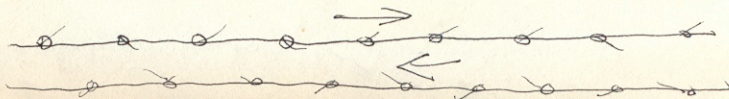
[WATER - FLOW] > FLOW AS A METAPHOR  
FOR MOVEMENT.  
FLOW def: WATER AND PEOPLE  
MOVING TOGETHER

RIVER AIRE - CANAL WALK

People movement



PEOPLE IN [FLOW]



# *Granville Lythe*

A passionate artist/ photographer experienced in interdisciplinary art and design with an ambition to move into art direction/ workshops.

## **Research interests:**

Walking  
History  
Environmental issues  
Current affairs  
Psychogeography  
Living life with enthusiasm

## **Specialisms:**

Multi format Photography  
Traditional and Digital Printing Techniques  
Adobe Photoshop  
Adobe Illustrator and Indesign  
Teamwork and collaborations  
Art working and visualisations

## **Education:**

2011-2014 BA (Hons) Art and Design (Interdisciplinary)  
Leeds College of Art and Design (L.C.A.)  
2009-2011 Access to HE (Art and Design), L.C.A.

## **Exhibitions:**

2014: Final Degree Show, Co-ordinates  
2013: International Contemporary Artists' Book Fair, Leeds University  
2013: Light Night, Circus of the Senses  
2012: International Contemporary Artists' Book Fair, Leeds University  
2012: Art in Unusual Spaces, Nine-to-Five-Nine  
2012: Light Night, Dead of Night, Leeds Museum  
2011: Foundation in Art and Design, Final Show, L.C.A.

**Workshops participation and other activities:**

- 2013: GIDE 2013: Ljubljana, Slovenia. Three-day workshop for partner colleges from seven institutions across Europe
- 2012: Volunteer, Saltaire Arts Trail, The Den Experiment
- 2012: Jamie Reid workshop, Temple works, Leeds
- 2012: Volunteer, Trinity Arts Festival, Leeds, The Den Experiment Co-Ordinator and Visitor Services Assistant
- 2012: Volunteer Invigilator, Ryan Gander Exhibition, Mexico and Leeds

**Assignments as freelance photographer, Leeds College of Art**

- 2015, February: Exhibition by Tessa Farmer
- 2015, February: Exhibition by Filippa Dobson
- 2015, March: Exhibition by Laimonis Mierins
- 2015, July: Exhibition by Collette Dickenson Pearce
- 2015, July: Exhibition by Cam Reid
- 2015, July: Exhibition by John Angerson



Mimih are an impulsive and conversational motif in my work, sharing visual tendencies with graffiti art. Mimih are like the Faeries of Ireland. Mimih are mischievous (but kind) ancestral spirits and flit between dimensions. Mimih painted and projected themselves on rock - often with enlarged genitals in x-ray. Phallic shape and/or inclusion in my work is nearly always automatic. Could be subconscious in tune with ancient fertility rites, but more likely it's just in tune with the ancient art of juvenile cock and balls graffiti (which maybe is a fertility rite of its own?). Sometimes it's intentionally there to challenge.

All things are related and not separated. That allows lots of space for experimentation and play. I'm following in the footsteps of Ray Johnson. His body of work, way of thought, Bunnies, Moticos, Nothings, are my like my gospel. TomZé Contemporaries and collaborators: Marcus Slease (writer), Ben Morris (Lost Wax, Chora, Akke Phallus Duo) and Josh Alexander (film maker, A616).

**MIMIH ARE ANCESTRAL SPIRITS. THEY ARE THE FIRST OF THE CREATION SPIRITS TO PAINT ON ROCK. THEY TAUGHT PEOPLE HOW TO PAINT & OTHERS LEARNT BY COPYING MIMIH ART. MIMIH ARE FAERIE-FOLK. MIMIH ARE A BIT LIKE HUMANS BUT CAN FLIT BETWEEN DIMENSIONS MORE EASILY. MIMIH ARE VERY OLD SAINTS, BUT NOT SAINTLY SAINTS...THEY ARE MORE LIKE ASTRONAUTS. ERKEMBODE IS MIMIH, SAINT AND ASTRONAUT.**

*Cross-cultural commonality really fascinates me. A great example of this is the annual Surva International Masquerade Games in Pernik, Bulgaria.*

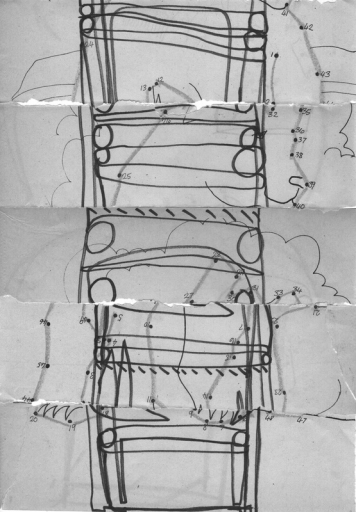
*Rituals are preformed and the similar features become so evident, from seemingly distant and different countries across continents (& yes they are predominantly fertility rituals! A pattern is*

*emerging...). So, if the Mimih live in the Northern Territory of Australia, then why not in Leeds, Pernik or London too?*

Erkembode's  
thoughts  
about

**ROAM!  
ROAM!  
ROAM!**

followed by  
examples  
of present  
and past  
works





Step 1



Step 2



Step 3



Step 4





## **ERKEMBODE: Not Just Another Saint**

Artist making MIMIH spirits as both spiritual guide and modernist motif. Currently working on multidisciplinary projects relating to things like pilgrimage, ley lines and Irishness-non-Irishness. So far 2016 will see BEAR PRESS publications *Lives of the Irish Mimih* and *A Fictional Life of Saint Erkembode* as well as research based exhibitions (*Grasping for Meaning*), with PILGRIMIMIH collective, at Assembly House and Bank Street Arts.

### **Personal details:**



- Erkembode (David Kelly-Mancaux) (b.1986)
- erkembode@gmail.com
- <http://erkembode.weebly.com>
- @erk\_embode
- BA History of Art, Leeds University, 2007

### **Selected exhibitions**

#### **Solo:**



#### **2013**

- *Erkembode: Not Just Another Saint*, Hardy Tree Gallery, London

#### **2012**

- *The World Record*, Saison Poetry Library, Southbank Centre, London
- *Long Live the Rasenna*, My Pixxa, London

#### **2011**

- *Prison Fights*, Horse Hospital, London

#### **Group:**



#### **2015**

- *Feinde: a new concrete poetry*, Hardy Tree Gallery, London
- *Please Add To & Return To: Mail Art Homage to Ray Johnson*, Printed Matter, New York

#### **2014**

- *Canvas Soundscapes*, Hardy Tree Gallery, London

#### **2013**

- *7 x 7*, Hardy Tree Gallery, London
- *Wildermenn*, House Gallery, London
- *Picardie Vagabonde*, Galerie L'Usage de Monde, Saint-Valery-sur-Somme, France
- *Gilles de Rais / Estates of Westeros*, Cornerhouse, Rich Mix Arts Centre, London & Cornerhouse, Manchester
- *Enemies*, Hardy Tree Gallery, London
- *Open Work*, Albert Gallery, London
- *Synesthesia*, Darnley Gallery, London

#### **2012**

- *Lex-Icon: treating image as text & text as image*, Université de Haute-Alsace, France

## Artist in Residence:



### 2012

- *Poetry Parnassus*, Saison Poetry Library, Southbank Centre

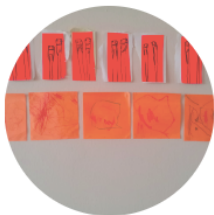
### 2013

- *Enemies of the South*, Arnolfini, Bristol
- *Emperors*, British Museum Central Archive, London

### 2012

- *Invitation d'Artistes Festival*, Galerie L'Usage de Monde, Saintt-Valery-sur-Somme, France

## Selected Publications:



### 2015

- *Kakania*, Austrian Cultural Forum
- *Fionn ag aislingeacht*, Stoma Press
- *Picardie Vagabonde*, Imprimerie F. Paillart

### 2014

- *Atkins Collected Petrarch / Petrarch Collected Atkins*, Crater Press
- *IT POPS*, Deadwood Press

### 2013

- *Enemies*, Penned in the Margins, October 2013
- *Gilles de Rais*, Like This Press, March 2013
- *The Archive of Failure*, Aaron Head, November 2013

### 2010

- *Saint Augustine of Hippo*, Kitt Press, October 2010
- over 20 print & online UK and international art journals

## Independent publishing (Bear Press experimental art & poetry):



### 2016

- *Redriffs*, flood-resistant-eucalyptus-mimih-poetry-chapbook-pack

### 2015

- *Please Mimih*, zine
- *Advanced Civilisations*, zine-poster

### 2014

- *Saint Poems*, receipt scroll

### 2013

- *Jurassic Strip*, e-book

### 2012

- *The Primarchs*, book
- *The Rasenna*, chapbook

@erk\_embode RoamRoamRoamers in  
#marathon 5hr talk-make-think-plan  
session+GranvilleLyth & NEW mimihs  
#runrunrunleeds



RETWEETS 2  
LIKES 2



**ROAM!  
ROAM!  
ROAM!**  
productive  
antag-  
onisms  
in action



## ROAM! ROAM! ROAMED!

14/3/2016

0 COMMENTS

ROAM! ROAM! ROAM! LEEDS! was a psychogeography walk starting at Leeds College of Art and finishing at the recently submerged Kirkstall Bridge Inn, by way of the River Aire/Leeds-Liverpool Canal. Curated and led by myself and Kai Syng Tan of the Leeds College of Art Research Team.

We met Mimih interventions along the way - mischievous and chalk. We had flood resistant Mimih pilgrim badges. We discussed the Boxing Day floods, industrial history of the Leeds-Liverpool Canal, water spirits, conversational graffiti, high rises and submerged ice breakers.

Thanks to all those that joined and supported the ROAM! ROAM! ROAM! Leeds.



Image ©: Neil Chester-Peters (for the Manchester Museums and Galleries Partnership)

### First National Museums and Wellbeing Week (29 February - 6 March 2016)

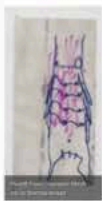
The first annual Museums and Wellbeing Week will take place from 29 February to 6 March 2016. This event will showcase the inspiring work museums across the UK are already doing in this field. It will be launched with a roundtable on Museums and Health for the All Party Parliamentary Working Group on Arts & Health set up to raise awareness of what museums can offer around wellbeing.

### FLOOD RESISTANT MIMIH

14/3/2016

0 COMMENTS

Here is a selection of Flood Resistant Mimih Pilgrim Badges, these are included in the ROAM! ROAM! ROAM! LEEDS! book packs and were worn around the Leeds-Liverpool Canal. The badges are made from flood resistant materials.



LCA\_Research  
@LCA\_Research

developing #practice-related #research activities with academic & non-academic staff #REF #exploration #expedition



Dr Kai Syng Tan FRSA @kaiyangtan  
@erk\_embode THANKS for an evocative expedition. See selection of memory triggers by Granville Lythe: tinyurl/runleeds

8:47 AM - 4 Mar 2016

Like Retweet Heart

ERKEMBODE  
@erk\_embode

## ROAM! ROAM! ROAMED!

erkembode.weebly.com/blog/roam-roam...

#Leeds #Mimih #Floods #RunRunRunArt #Aire

View translation



Leeds  
Inspired

see what's out there

Find an Event...

### Featured Events

Currently listing any featured events that have caught the eye of the Leeds Inspired team.

- Crime & Punishment Exhibition  
23 Jan 2016 - 31 Dec 2016  
Abbey House Museum
- Changing Faces of Leeds  
5 Feb 2016 - 5 Jun 2016  
Leeds City Museum
- Picture Book  
27 Jan 2016 - 17 Apr 2016  
The Valley
- Battle of the Burger  
26 Feb 2016 - 27 Feb 2016  
Great Mills
- Broken Flowers  
26 Feb 2016 - 7 Apr  
Howard Assembly Room
- Paper Planes

Home About Events Projects Blog Contact Kai

Your what's on guide for all things cultural in Leeds

View Add

### Roam! Roam! Roam! Leeds #runrunrunart #runrunrunleeds

29th February 2016 5:00pm - 6:30pm

Leeds College of Art, Blenheim Walk Building  
Blenheim Walk, Leeds, LS2 9AQ

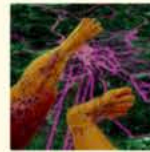
Visual Art, Outdoor

Part of the first National Museums and Wellbeing Week 29 February - 6 March 2016.

Walk along the River Aire. Share experiences of the floods. Make a collage with found materials.

Another innovative fine art practice-related research event reminiscent of the World's Best International Berlin for

Free event



Place

ERKEMBODE @erk\_embode - Feb 29  
LeedsLunch #RoamRoamRoam



ERKEMBODE @erk\_embode - Feb 29  
How to end a #RoamRoamRoam? @KirkstallBridge #Flood #RunRunRunArt



# ROAM! ROAM! ROAM!

## February 29 walk

Online  
documentation by  
Erkembode and  
Tan, photographs  
by Lythe

TRAVELING

TERRITORIES



IMG\_3483.jpg



IMG\_3482.jpg



IMG\_3474.jpg



IMG\_3475.jpg

WALK ABOUT:

TEMPORARY OWNERSHIP

NATURE TAKING BACK THE LAND

↓ Waterproof mim - <sup>(mim is only.)</sup> This boy is prepared.



7. CHANGE LIVE EXPRESSION/MOTIF. MIMI